




ARTICLE

<https://doi.org/10.1038/s42003-020-1001-6>

OPEN

Mutually suppressive roles of KMT2A and KDM5C in behaviour, neuronal structure, and histone H3K4 methylation

Christina N. Vallianatos^{1,2} , Brynne Raines³ , Robert S. Porter^{1,2} , Katherine M. Bonefas^{1,4}, Michael C. Wu⁵ , Patricia M. Garay^{1,4} , Katie M. Collette³, Young Ah Seo⁶, Yali Dou⁷, Catherine E. Keegan^{1,8} , Natalie C. Tronson³   & Shigeki Iwase¹  

Histone H3 lysine 4 methylation (H3K4me) is extensively regulated by numerous writer and eraser enzymes in mammals. Nine H3K4me enzymes are associated with neurodevelopmental disorders to date, indicating their important roles in the brain. However, interplay among H3K4me enzymes during brain development remains largely unknown. Here, we show functional interactions of a writer-eraser duo, *KMT2A* and *KDM5C*, which are responsible for Wiedemann-Steiner Syndrome (WDSTS), and mental retardation X-linked syndromic Claes-Jensen type (MRXSCJ), respectively. Despite opposite enzymatic activities, the two mouse models deficient for either *Kmt2a* or *Kdm5c* shared reduced dendritic spines and increased aggression. Double mutation of *Kmt2a* and *Kdm5c* clearly reversed dendritic morphology, key behavioral traits including aggression, and partially corrected altered transcriptomes and H3K4me landscapes. Thus, our study uncovers common yet mutually suppressive aspects of the WDSTS and MRXSCJ models and provides a proof of principle for balancing a single writer-eraser pair to ameliorate their associated disorders.

¹Department of Human Genetics, Michigan Medicine, University of Michigan, Ann Arbor, MI 48109, USA. ²Genetics and Genomics Graduate Program, University of Michigan, Ann Arbor, MI 48109, USA. ³Department of Psychology, University of Michigan, Ann Arbor, MI 48109, USA. ⁴The University of Michigan Neuroscience Graduate Program, Ann Arbor, MI, USA. ⁵Neurodigitech, LLC, San Diego, CA 92126, USA. ⁶Department of Nutritional Sciences, School of Public Health, University of Michigan, Ann Arbor, MI 48109, USA. ⁷Department of Pathology, Michigan Medicine, University of Michigan, Ann Arbor, MI 48109, USA. ⁸Department of Pediatrics, Michigan Medicine, University of Michigan, Ann Arbor, MI 48109, USA. ✉email: ntronson@umich.edu; siwase@umich.edu

Dysregulation of histone methylation has emerged as a major contributor to neurodevelopmental disorders (NDDs) such as autism spectrum disorders and intellectual disabilities¹. Histone methylation can be placed on a subset of lysines and arginines by histone methyltransferases (writer enzymes) and serves as a signaling platform for a variety of nuclear events including transcription². Reader proteins specifically recognize methylated histones, thereby converting methylation signals into higher-order chromatin structures. Histone methylation can be removed by a set of histone demethylases (eraser enzymes). Pathogenic variants in all three classes of methyl-histone regulators cause NDDs, indicating critical, yet poorly understood roles of histone methylation dynamics in brain development and function³.

Histone H3 lysine 4 methylation (H3K4me) is one of the most well-characterized histone modifications. H3K4me is primarily found at transcriptionally permissive areas of the genome. The three states, mono-, di-, and tri-methylation (H3K4me1–3), uniquely mark gene regulatory elements and play pivotal roles in distinct steps of transcription. While H3K4me3/2 are enriched at transcriptionally engaged promoters, H3K4me1 is a hallmark of transcriptional enhancers^{4,5}. At promoters, H3K4me3 contributes to recruitment of general transcription machinery TFIID and RNA polymerase II^{6,7}. H3K4me1 at enhancers can be recognized by BAF, an ATP-dependent chromatin remodeling complex⁸.

H3K4me is extensively regulated by more than seven methyltransferases and six demethylases in mammals⁹. Consistent with the important roles of H3K4me in transcriptional regulation, genomic distribution of H3K4me appears highly dynamic during brain development¹⁰. However, the contributions of each of these enzymes in the dynamic H3K4me landscapes of the developing brain remain largely unknown. Strikingly, genetic alterations in nine H3K4me enzymes and at least two H3K4me readers have been associated with human NDDs to date, indicating the critical roles of H3K4me balance¹⁰ (Fig. 1a). These human conditions can be collectively referred to as brain H3K4 methylopathies and point to non-redundant yet poorly understood roles of these genes controlling this single post-translational modification for faithful brain development. Of note, some of these enzymes can have non-enzymatic scaffolding function¹¹ as well as non-histone substrates¹²; therefore, these disorders may potentially involve mechanism outside histone H3K4 methylation.

As histone modifications are reversible, one can, in theory, correct an imbalance by modulating the writers or erasers. Chemical inhibitors of histone deacetylases (HDACs) have been successfully used to rescue phenotypes in mouse models of NDDs. HDAC inhibitors were able to ameliorate learning disabilities in mouse models of Rubinstein-Taybi and Kabuki syndromes, which are deficient for CREBBP or KMT2D, writer enzymes for histone acetylation or H3K4me, respectively^{13,14}. However, the HDAC inhibitors, such as SAHA and AR-42, used in these studies interfere with multiple HDACs¹⁵, which could potentially result in widespread side effects. Given the non-redundant roles of the H3K4me enzymes, a more specific perturbation is desirable.

In order to achieve specific modulation of H3K4me, an important first step is to delineate functional relationships between the H3K4 enzymes. Focus of the work is on a pair of NDD-associated writer/eraser enzymes: KMT2A and KDM5C. Haploinsufficiency of *KMT2A* underlies Weidemann–Steiner Syndrome (WDSTS), characterized by developmental delay, intellectual disability, characteristic facial features, short stature, and hypotonia¹⁶. Loss of KDM5C function defines Mental Retardation, X-linked, syndromic, and Claes–Jensen type (MRXSCJ), in which individuals display an intellectual disability syndrome with aggression, short stature, and occasional autism

comorbidity¹⁷. Mouse models have provided experimental support for causative impacts of KMT2A and KDM5C deficiencies in impaired cognitive development^{18–22}. Social behavior and neuronal structure in *Kmt2a*-KO mice however have not been characterized.

In the present work, we tested whether modulating a single H3K4me writer or eraser can ameliorate the neurodevelopmental symptoms observed in the WDSTS and MRXSCJ mouse models. We generated *Kmt2a*-, *Kdm5c*-double mutant (DM) mice, and performed systematic comparisons between wild-type (WT), single mutants, and DM mice.

Results

KMT2A and KDM5C co-exist broadly in the brain. We first examined expression patterns of KMT2A and KDM5C using publicly available resources, and found the two genes are broadly expressed throughout brain regions of adult mice and humans (Supplementary Fig. 1). *Kmt2a* and *Kdm5c* are expressed at comparable levels in all major excitatory and inhibitory neuron subtypes as well as glia cells in mouse visual cortices (Supplementary Fig. 1a), and also throughout mouse brains (Supplementary Fig. 1b). Consistently, developing and aging human brains express *KMT2A* and *KDM5C* at high, steady levels (Supplementary Fig. 1c). Thus, both writer and eraser are co-expressed across brain cell types, regions, and developmental stages in both humans and mice.

Generation of *Kmt2a*-*Kdm5c* double-mutant mice. To test genetic interaction of *Kmt2a* and *Kdm5c*, we generated *Kmt2a*-*Kdm5c* double-mutant (DM) mice. Experimental mice were F1 hybrids of the two fully congenic strains: 129S1/SvImJ *Kmt2a*^{+/-} males²³ and C57BL/6J *Kdm5c*^{+/-} females²¹ (Fig. 1b). This cross resulted in the following genotypes of male mice in an identical genetic background: wildtype (WT); *Kmt2a* heterozygote (*Kmt2a*-HET: *Kmt2a*^{+/-}), *Kdm5c* hemizygous knock-out (*Kdm5c*-KO: *Kdm5c*^{-/-}), and *Kmt2a*-*Kdm5c* double-mutant (DM: *Kmt2a*^{+/-}, *Kdm5c*^{-/-}), thereby allowing us to perform a comparison between the WDSTS model (*Kmt2a*-HET), the MRXSCJ model (*Kdm5c*-KO), and their composite (DM). We focus on males, because MRXSCJ predominantly affects males and *Kdm5c*-heterozygous female mice exhibit only minor cognitive deficits²².

These mice were born at expected Mendelian ratios of 25% per genotype, demonstrating the DM mice were not synthetic lethal (Fig. 1c). Genotypes were confirmed at RNA and DNA levels (Supplementary Fig. 1a–c), and protein level for KDM5C (Supplementary Fig. 1d). Brain anatomy showed no gross deformities in any of the genotypes (Supplementary Fig. 1e). Both *Kmt2a*-HET and *Kdm5c*-KO mice showed significant body weight reduction compared to WT (Fig. 1d, Supplementary Fig. 1f, one-way ANOVA: $F_{3,55} = 10.28$, $p < 1.0 \times 10^{-4}$, Tukey's multiple comparison test: WT vs 2 A: $p = 0.008$, WT vs 5 C: $p = 0.008$). DM body weight was significantly smaller compared to WT (DM vs WT: $p < 1.0 \times 10^{-4}$). Thus, loss of *Kdm5c* and *Kmt2a* heterozygosity both led to growth retardation, which was not corrected but rather slightly exacerbated in DM mice. Note that for all the four-way comparisons in this study, we first represent the p -values from one-way ANOVA tests of genotype–phenotype interaction with histograms. We then report p -values from post-hoc tests of all six genotype comparisons with 95% confidence intervals of group mean differences.

Memory impairments in *Kdm5c*-KO were ameliorated in DM. We first sought to determine the effect of loss of *Kmt2a* and/or *Kdm5c* on mouse behavior through a battery of behavioral tests.

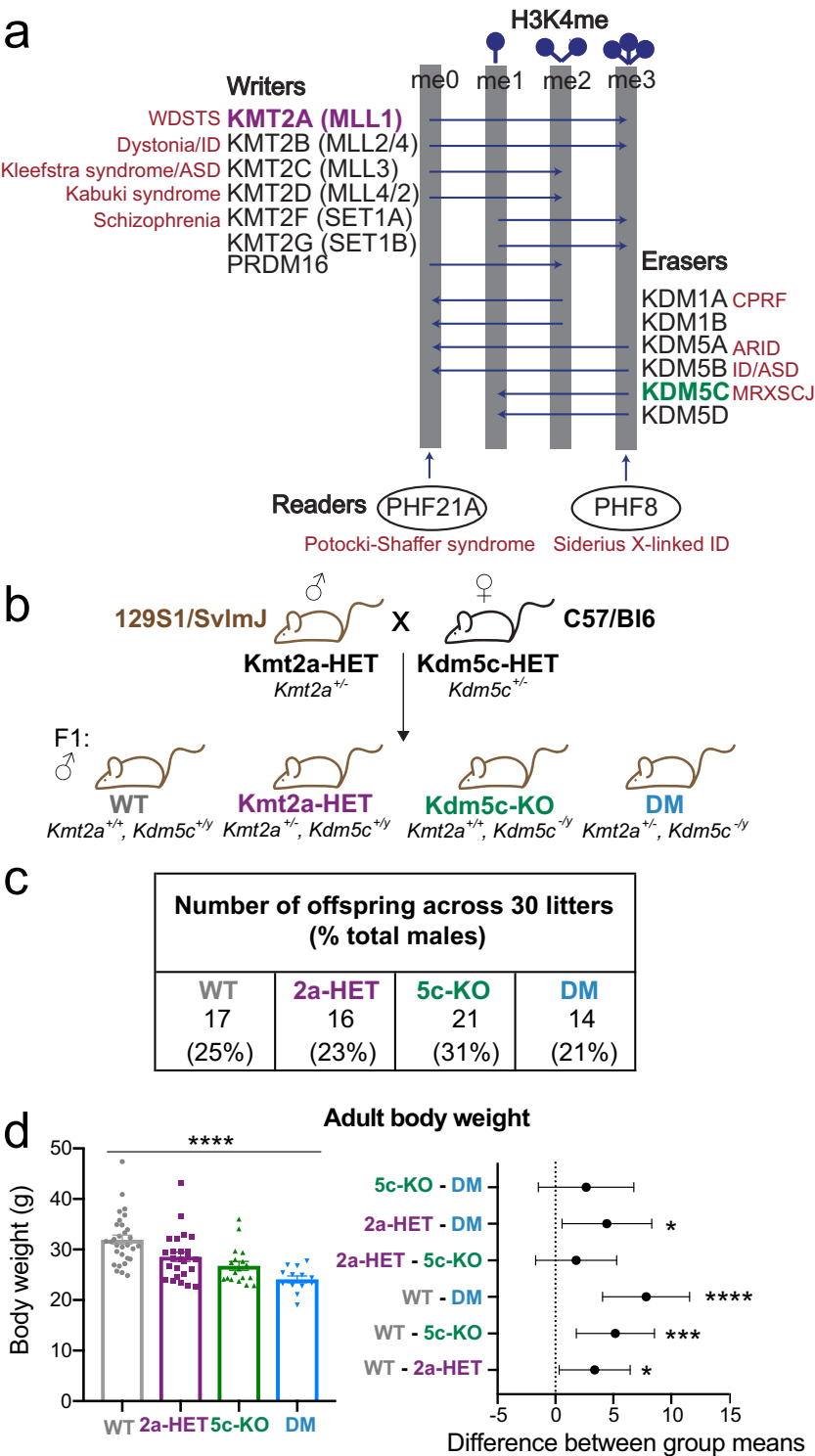


Fig. 1 The H3K4 methylopathies and generation of the *Kmt2a-Kdm5c* double-mutant (DM) mouse. **a** Histone H3 lysine 4 (H3K4me) methyltransferases (writers) and demethylases (erasers) depicted by their ability to place or remove H3K4me. Reader proteins recognizing specific H3K4me substrates (arrows) are depicted below. Genes are listed next to their associated neurodevelopmental disorder. KMT2A and KDM5C are highlighted in purple and green, respectively. WDSTS Weideman–Steiner Syndrome, ID intellectual disability, ASD autism spectrum disorder, CPRF cleft palate, psychomotor retardation, and distinctive facial features, ARID autosomal recessive ID, MRXSJC mental retardation, X-linked, syndromic, Claes–Jensen type. **b** Mouse breeding scheme crossing congenic 129S1/SvImJ *Kmt2a*-heterozygous males with congenic C57/Bl6 *Kdm5c*-heterozygous females, resulting in F1 generation mice. Only males were used in this study. **c** Numbers of male offspring across 30 litters, showing Mendelian ratios of expected genotypes. **d** Left panel: body weight of adult mice >2 months of age (mean ± SEM, *****p* < 0.0001 in One-Way ANOVA). Right panel: difference between group means of weight (mean ± 95% confidence intervals, **p* < 0.05, ***p* < 0.01, ****p* < 0.001, *****p* < 0.0001 in Tukey’s multiple comparison test).

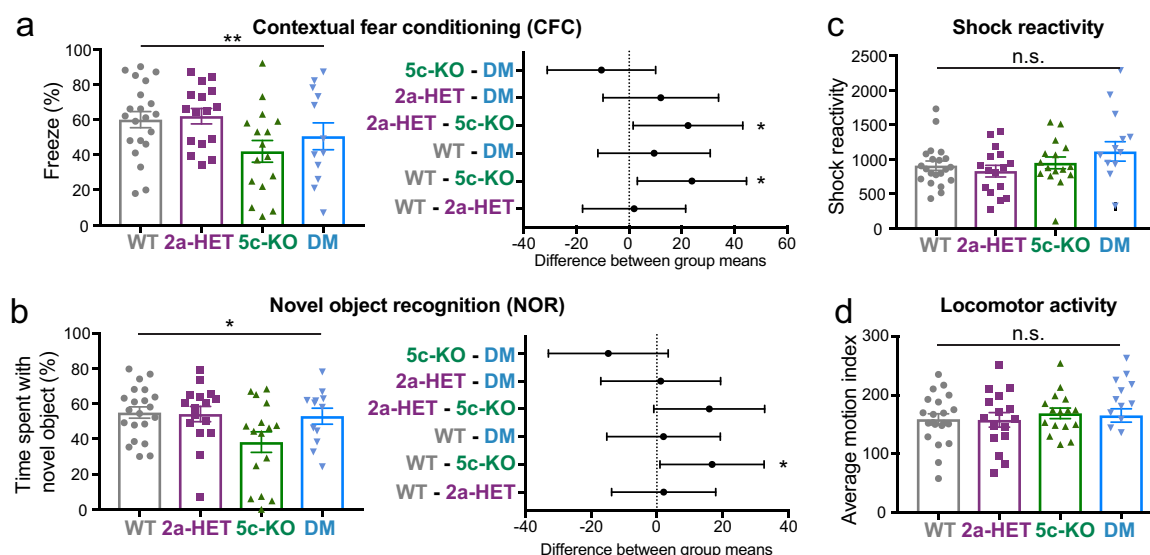


Fig. 2 Deficit of memory-related behavior in *Kdm5c*-KO and its rescue in DM. **a** Contextual fear conditioning test. Left panel: freezing levels after shock on test day (mean \pm SEM, $*p < 0.05$). Right panel: difference between group means of freezing (mean \pm 95% confidence intervals, $*p < 0.05$). **b** Novel object recognition test. Left panel: preference for novel versus familiar object (mean \pm SEM, $*p < 0.05$). Right panel: difference between group means of freeze response (mean \pm 95% confidence intervals, $*p < 0.05$). **c** Response to mild foot-shock (mean \pm 95% confidence intervals, no statistical significance [n.s.]). **d** Locomotor activity (mean \pm 95% confidence intervals, no statistical significance [n.s.]). $N = 21$ WT, $N = 16$ *Kmt2a*-HET, $N = 16$ *Kdm5c*-KO, and $N = 12$ DM animals were used for all studies.

Learning and memory was measured by two independent tests, contextual fear conditioning (CFC) and novel object recognition (NOR). In CFC, we observed a significant effect of genotype (CFC: $F(3,60) = 4.133$, $p = 0.010$). In accordance with previous findings^{21,22}, *Kdm5c*-KO showed significant deficits in associative fear memory in CFC (Fig. 2a, WT vs 5C: $p = 0.017$, 2A vs 5C: $p = 0.024$). Previous work reported that homozygous deletion of *Kmt2a* in excitatory hippocampal neurons leads to impaired fear memory in the CFC²⁰. In contrast, *Kmt2a*-HET mice showed no deficits in either CFC or NOR (Fig. 2a, b) (CFC: $p = 1.000$), indicating that *Kmt2a*-heterozygosity does not lead to learning impairment measured in these assays. Importantly, DM mice did not differ from WT mice (Fig. 2a) ($p = 0.923$), suggesting that *Kmt2a* heterozygosity rescues CFC memory deficits of *Kdm5c*-KO mice.

A similar pattern emerged in NOR, where we observed a significant main effect of genotype ($F(3,64) = 3.20$, $p = 0.030$). Here, *Kdm5c*-KO mice showed significantly less preference for the novel object than other genotypes (Fig. 2b) (WT vs 5C: $p = 0.041$; 2a vs 5C: $p = 0.091$). Consistent with our CFC results, neither *Kmt2a*-HET mice nor DM mice differed from WT mice ($p = 1.000$), suggesting that *Kmt2a* heterozygosity does not impair memory, but can rescue impairments of *Kdm5c*-KO. Importantly, WT, *Kmt2a*-Het, and DM mice showed preference for the novel object ($Z = 2.029$; $p = 0.041$). Nevertheless, as this was not a strong preference, it is likely that non-mnemonic effects, including anxiety processes, also contributed to avoidance-like behavior in *Kdm5c*-KO mice. Differences between genotypes in memory tasks were not attributable to locomotor activity or shock responsiveness, as none of these parameters showed significant differences among the genotypes (Fig. 2c, d).

Social behavior in the single and double mutants. We next examined social behavior using the three independent behavioral paradigms. First, social interaction was tested with the three-chambered preference test, with an overall effect of genotype ($F(3,60) = 3.726$, $p = 0.016$). WT mice showed a robust preference

for the novel mouse over the toy mouse ($Z = 2.97$, $p = 0.003$). Consistent with previous studies²¹, *Kdm5c*-KO mice exhibited significantly less preference for the stranger mouse compared with WT (WT vs 5C: $p = 0.023$); whereas *Kmt2a*-HET mice showed no differences from WT (Fig. 3a, WT vs 2A: $p = 0.563$)²⁰. Similar to *Kdm5c*-KO, DM mice showed a strong trend towards less time with stranger mice compared to WT (WT vs DM: $p = 0.077$). No difference was detected between *Kdm5c*-KO and DM (5C vs DM: $p = 1.000$), indicating that *Kmt2a* heterozygosity does not alter social preference or rescue the deficit of *Kdm5c*-KO.

In tests of social dominance (Fig. 3b), both *Kmt2a*-HET and *Kdm5c*-KO mice won more frequently against WTs (2A vs WT: 60.9%, $p = 0.091$, 5C vs WT: 68.4%, $p = 0.008$). In contrast, DM animals lost more than 80% of their bouts against WT (DM vs WT: $p = 1.47 \times 10^{-5}$). Although DM mice were slightly smaller compared to single mutants (Fig. 1d), this is unlikely to drive submissive behaviors, as body mass has been shown to have minimal impact on social hierarchy unless excess difference ($>30\%$) is present between animals²⁴, which is not the case in our study (Fig. 1d; 2A vs WT: 11%, 5C vs WT: 17%, DM vs WT: 25%). These results indicate that the two single mutants share heightened social dominance and the double mutation reverses the social dominance.

Lastly, in the resident-intruder test, similar to other behavioral paradigms, overall effects of genotype were evident in both aggressive and submissive behavior (Fig. 3c, aggressive behavior: $F(3,60) = 3.642$, $p = 0.018$; aggression \times genotype: $F(12,240) = 1.853$, $p = 0.041$; submissive behavior: ($F(3,60) = 4.335$, $p = 0.008$). The genotype effect on aggressive behaviors inversely correlated with that of submissive behavior, reinforcing the changes in specific behaviors rather than general locomotor activity. Both *Kmt2a*-HET and *Kdm5c*-KO showed a trend of increased aggression and decreased submission when we combined frequency of all aggressive or submissive behavior types compared to WT (Fig. 3c).

DM mice showed significantly reduced overall aggression compared to the two single mutants (Fig. 3c, DM vs 5C: $p = 0.045$, DM vs 2A: $p = 0.051$). Reciprocally, DM mice were more

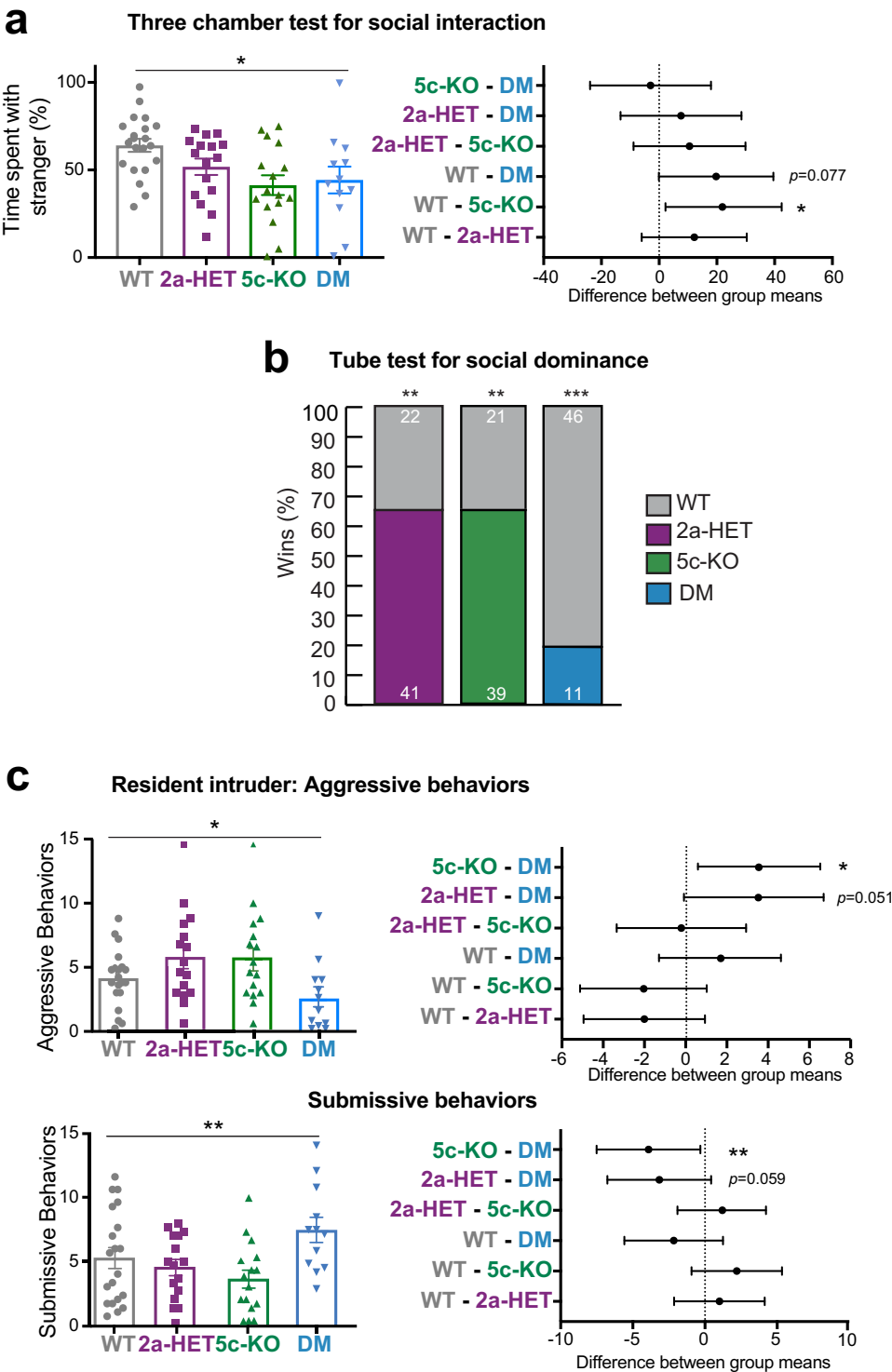


Fig. 3 Differential impacts of double mutation in social behavior. **a** Three chamber test for social interaction. Left panel: preference for stranger versus toy mouse (mean \pm SEM, $*p < 0.05$). Right panel: difference between group means of preference (mean \pm 95% confidence intervals, $*p < 0.05$). **b** Tube test for social dominance. Proportion of wins in matches of each mutant versus WT. Numbers on colored bars represent total number of wins for WT (gray, above) or each mutant (below) in every matchup. $**p < 0.01$, $***p < 0.001$, Exact binomial test. **c** Resident intruder test. Left panel: average number of all aggressive and submissive behaviors (mean \pm SEM, $*p < 0.05$, $**p < 0.01$). Right panel: difference between group means of aggressive and submissive behaviors (mean \pm 95% confidence intervals, $*p < 0.05$, $**p < 0.01$). $N = 21$ WT, $N = 16$ *Kmt2a*-HET, $N = 16$ *Kdm5c*-KO, and $N = 12$ DM animals were used for all studies.

submissive compared to single mutants (DM vs 5C: $p = 0.006$, DM vs 2A: $p = 0.059$). Comparison between DM and WT mice did not yield any significant differences. The decreased aggression and increased submission of DM relative to the single mutants were also observed in multiple behavior types, including mounting, chasing for aggression (Supplementary Fig. 3a), and cowering and running away for submission (Supplementary Fig. 3b). Thus, these results suggest that double mutations alleviate aggressive behavior of both *Kmt2a*-HET and *Kdm5c*-KO mice.

Together, the behavioral studies revealed more pronounced deficits in *Kdm5c*-KO animals compared to *Kmt2a*-HET mice in terms of memory and social interaction, while *Kmt2a*-HET and *Kdm5c*-KO mice shared increased social dominance and aggression. The consequences of double mutations varied between the tests, with clear rescue effects on cognitive tasks, dominant behavior, and aggression, and no effect on social interactions. No behavioral traits were exacerbated in DM. These results establish common and unique behavioral deficits of *Kdm5c*-KO and *Kmt2a*-HET mice and mutual suppression between the two genes in some of the traits.

Roles of KMT2A, KDM5C, and their interplay in neuronal morphology. Altered dendrite morphology is a hallmark of many human NDDs, as well as animal models of NDDs²⁵. We previously found reduced dendritic length and spine density in basolateral amygdala (BLA) neurons of *Kdm5c*-KO adult male mice²¹. Assessment of dendritic morphology in *Kmt2a*-HET has not been reported. We first performed comparative dendrite morphometry of pyramidal neurons in the BLA using Golgi staining for the four genotypes (Fig. 4). For *Kdm5c*-KO neurons, we recapitulated our previous findings of reduced dendrite lengths (Fig. 4a, b, one-way ANOVA followed by Tukey's multiple comparison test, WT vs 5C: $p = 0.034$) and lower spine density (Fig. 4a, c, WT vs 5C: $p = 0.008$). Similar to *Kdm5c*-KO neurons, *Kmt2a*-HET cells exhibited a reduction in spine density (Fig. 4b, c, WT vs 2A: $p = 0.005$) but not in dendritic length (WT vs 2A: $p = 0.177$).

Dendrite lengths of DM did not differ significantly from that of WT (Fig. 4b, WT vs. DM: $p = 0.550$); however, these lengths were also not different from that of *Kdm5c*-KO (*Kdm5c*-KO vs. DM: $p = 0.534$), representing a weak restorative effect. In contrast, dendritic spine density of DM showed a significant increase that surpassed a rescue effect (Fig. 4c). As morphology of dendritic spines progressively changes during synaptogenesis and development, we also asked whether developmental subtypes of dendritic spines were altered in any genotype. We did not find dramatic changes in spine morphology among the four genotypes (Fig. 4d, Supplementary Fig. 4), indicating selective requirement of *Kdm5c* and *Kmt2a* for regulation of spine numbers.

Since the ventral hippocampus CA1 (vCA1) receives inputs from BLA²⁶, we also performed morphometry analyses of pyramidal neurons in this region. Genotype had significant impact on dendritic spine density (one-way ANOVA, $F(3, 92) = 11.51$, $p < 1.0 \times 10^{-4}$) but not on dendritic lengths ($F(3, 92) = 0.564$, $p = 0.639$). While dendritic lengths did not show any difference in *Kdm5c*-KO and *Kmt2a*-HET neurons, spine density was decreased in the two single mutants compared to WT (WT vs 2A: $p = 2.0 \times 10^{-4}$, WT vs 5C: $p < 1.0 \times 10^{-4}$).

In DM vCA1, spine density showed a trend of decrease compared to WT, yet this did not reach statistical significance (WT vs DM: $p = 0.066$). DM spine density was significantly higher than *Kdm5c*-KO (DM vs 5C: $p = 0.021$) but similar to *Kmt2a*-HET (DM vs 2A: $p = 0.223$). These analyses indicate reduced spine density in both *Kdm5c*-KO and *Kmt2a*-HET vCA1 neurons and its partial correction in DM.

Overall, we conclude that *Kmt2a*-HET and *Kdm5c*-KO share a reduced spine density in both BLA and vCA1. Double mutations led to reversal of spine phenotype in BLA and partial restoration in vCA1, supporting mutually suppressive roles of KMT2A and KDM5C in dendritic spine development.

Roles of KMT2A and KDM5C in mRNA expression. *Kdm5c*-KO mice exhibit aberrant gene expression patterns in the amygdala and frontal cortex²¹, and hippocampus²². Excitatory-neuron specific conditional *Kmt2a*-KO mice were also characterized with altered transcriptomes in the hippocampus and cortex^{19,20}. However, the global gene expression of *Kmt2a*-HET, which is akin to the WDSTS syndrome genotypes, has not been determined. To compare the impact of *Kmt2a*-heterozygosity and *Kdm5c*-KO on the transcriptomes, we performed mRNA-seq using the amygdala and the hippocampus of adult mice with four animals per genotype. We confirmed the lack or reduction of reads from *Kdm5c* exons 11 and 12 and *Kmt2a* exons 8 and 9 (Supplementary Fig. 2a, b). The accurate microdissection of brain regions was confirmed by co-clustering of our data with another published mRNA-seq²⁷ (Supplementary Fig. 5a). Principal component analysis (PCA) indicated that transcriptomic divergence was primarily driven by brain regions rather than genotypes (Supplementary Fig. 6a).

In the amygdala, we identified 132 differentially expressed genes (DEGs) in *Kdm5c*-KO (5C-DEGs) and no 2A-DEGs ($p\text{-adj} < 0.1$, $n = 4$, Fig. 5a, Supplementary Fig. 6). The hippocampus yielded a consistently higher number of DEGs across the mutant genotypes (344 5C-DEGs and 4 2A-DEGs). The small number of 2A-DEGs is likely due to the one remaining copy of *Kmt2a*. Given increased social dominance (Fig. 3b) and clear reduction of dendritic spines (Fig. 4) in *Kmt2a*-HET mice, we reasoned that such phenotypes might be associated with mild gene misregulation, which was not detected by DESeq2. To be able to analyze the gene expression in *Kmt2a*-HET, we set a relaxed cut off ($p < 0.005$) and retrieved 78 and 139 genes as 2A-DEG from the amygdala and hippocampus, respectively (Fig. 5b, Supplementary Fig. 6). We found an overall similarity in gene misregulation between the two brain regions for both *Kdm5c*-KO and *Kmt2a*-HET (Supplementary Fig. 7a, b). Table S1 lists all DEGs found in the study.

We next compared the gene expression profiles between the single mutants. The majority of 5C-DEGs were upregulated and 2A-DEGs were downregulated (Fig. 5a, b, Supplementary Fig. 6). This result agrees with KMT2A's primary role as a transcriptional coactivator and KDM5C's suppressive activity on transcription, yet KDM5C can also act as a positive regulator of transcription²⁸. If KMT2A and KDM5C counteract, DEGs would be oppositely misregulated between the single mutants. Indeed, we found that 28–29% of 5C-DEGs and 8–17% of 2A-DEGs show signs of opposite regulation in the other single mutant (Supplementary Fig. 8a, b). Substantial fractions of DEGs were misregulated in the same directions (Supplementary Fig. 8a, b), which might be due to indirect consequences of gene manipulations and altered circuits.

Impact of double mutations on mRNA expression. If the double mutations fully restore the normal transcriptome, the DM transcriptome should resemble to that of WT over single mutants. However, the DM brain tissues had a similar number of DEGs as *Kdm5c*-KO (Fig. 5a). Many DM-DEGs overlap with 5C-DEGs (84 in the amygdala and in the hippocampus), and 41 DM-DEGs overlap with 2A-DEGs in the hippocampus (Supplementary Fig. 8c). Thus, the DM transcriptome still retains some mRNA misregulations of single mutants and does not fully return to the normal state.

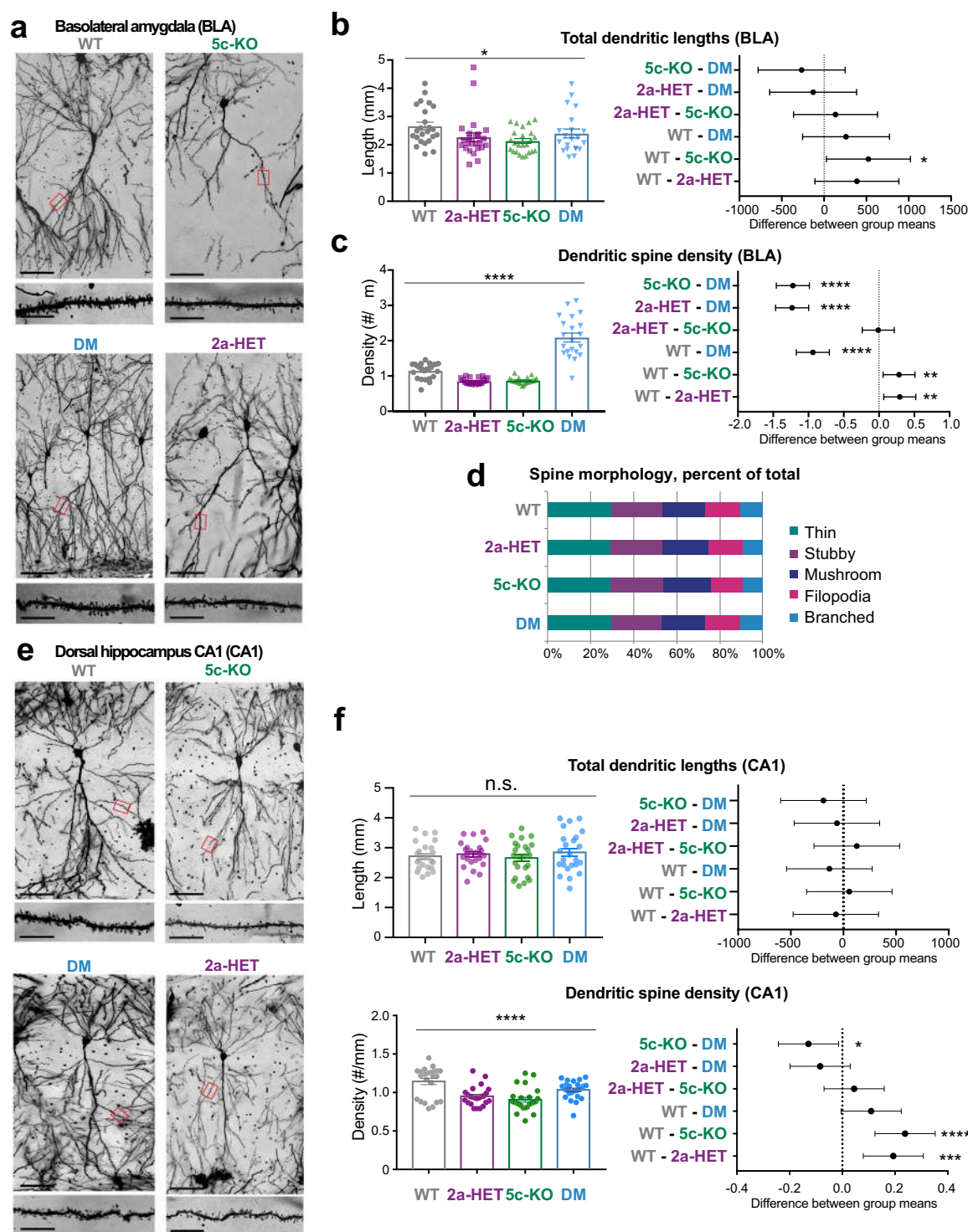


Fig. 4 Altered dendrite morphology of *Kdm5c*-KO and *Kmt2a*-HET was reversed in DM animals. **a** Representative images of basolateral amygdala (BLA) pyramidal neurons across all genotypes, depicting overall neuron morphology including dendrite lengths and dendritic spines. Scale bars represent: 100 μ m (above, whole neuron image), 10 μ m (below, spine image). **b, c** Left panel: total dendrite lengths (**b**) or spine density (**c**) (mean \pm 95% $p < 0.05$, **** $p < 0.0001$, one-way ANOVA). Right panel: difference between group means (mean \pm 95% confidence intervals, * $p < 0.05$, ** $p < 0.01$, *** $p < 0.001$, **** $p < 0.0001$ in Tukey's multiple comparison test). **d** Quantification of spine morphology subtypes represented as percentage of total spines counted. **e, f** Morphometry of pyramidal neurons within the dorsal hippocampus CA1. At least 20 neurons from four animals per genotype were quantified for all panels.

To assess the rescue effect more quantitatively, we compared fold changes of single-mutant DEGs as a group between genotypes. Expression of 5C-up-regulated genes was significantly lower in the DM amygdala and hippocampus (Paired Wilcoxon signed-rank test, $p < 1.41 \times 10^{-8}$, Fig. 5c). Reciprocally, expression

of 2A-down-regulated genes was significantly higher in DM brain tissues ($p < 1.26 \times 10^{-8}$, Fig. 5c). We further examined how individual DEGs behaved in DM. The fold changes of 5C-DEGs and 2A-DEGs in single mutants clearly correlated with those in DM, indicating that single-mutant DEGs are similarly

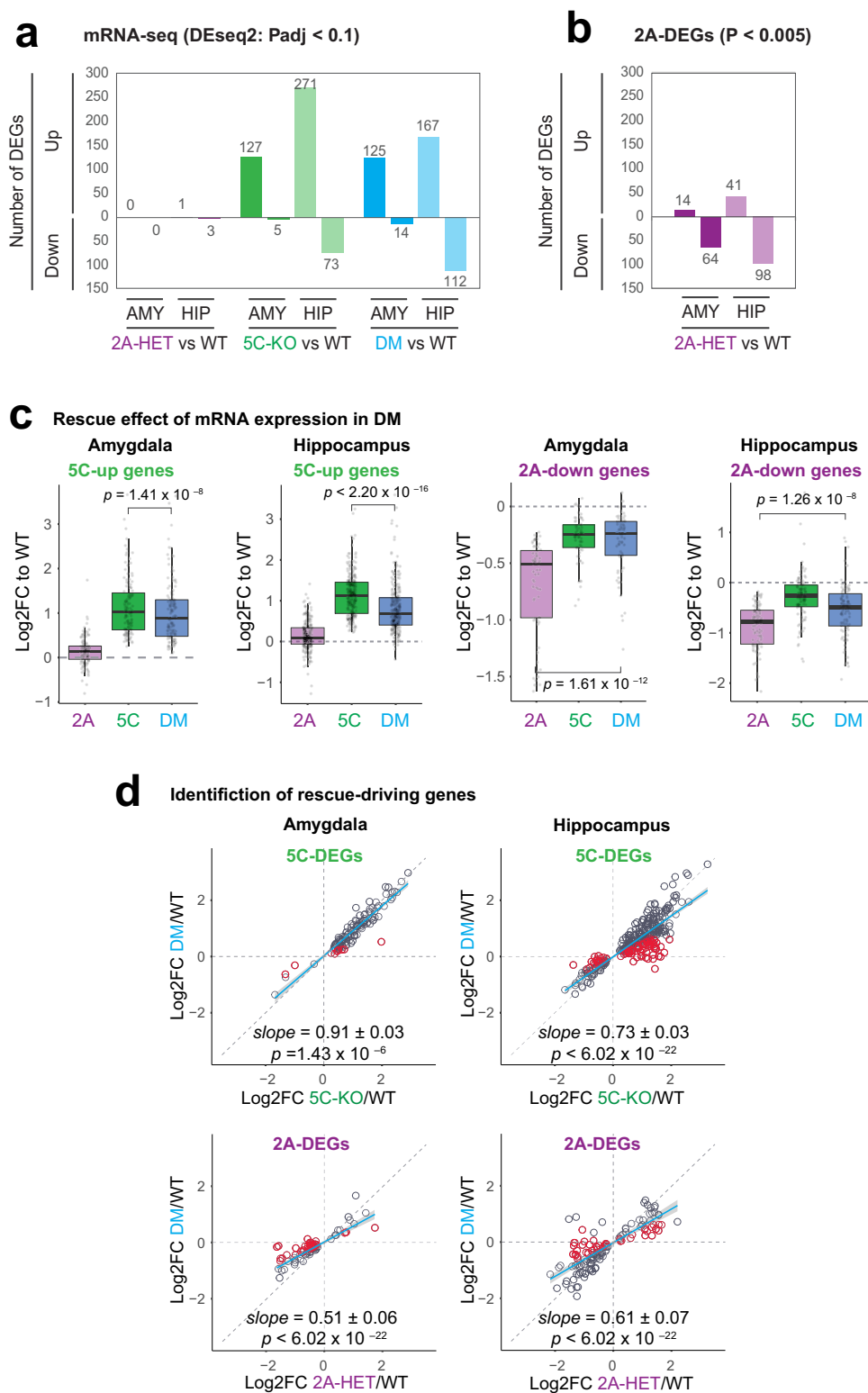


Fig. 5 The transcriptomes in the amygdala and hippocampus. **a** Number of differentially expressed (DE) genes across genotypes were determined using a threshold of $p\text{-adj} < 0.1$. or relaxed cut-off of $p < 0.005$ for *Kmt2a*-HET in **b** (see also Table S1). We analyzed amygdala and hippocampal tissues from four animals for each genotype. **c** Behavior of single-mutant DEGs in DM. Log2 fold change of DEGs relative to WT were plotted across the three mutants. Boxplot features: box: interquartile range (IQR), bold line: median, gray dots: individual genes. Associated p values result from Wilcoxon signed-rank tests. **d** Identification of rescue-driving genes and regression analysis. Blue fitting lines and slopes result from linear regression of log2 fold changes between the two genotypes. Gray shade: 95% confidence interval. P -values indicate probability of the null hypothesis that the fitting line does not differ from 1 (Warton et al.⁴⁸). Red circles: rescue-driving genes (see Methods).

Table 1 Rescued 5C-DEGs that drove enrichment of the KEGG pathway “Neuroactive ligand-receptor interaction”.

Gene symbol	Encoded protein	Chromosome	Description
<i>Tacr1</i>	Tachykinin receptor 1	chr6	Tachykinin receptor (aka neurokinin-1 or Substance-P receptor). G-protein coupled receptors found across the brain. Elevated <i>TACR1</i> mRNA levels in ASD patients with heightened aggression ⁴⁹ . Decreased aggression in <i>Tacr1</i> -KO mice ⁵⁰ .
<i>Lhb</i>	Beta subunit of luteinizing hormone (LH)	chr7	Major roles of LH in testosterone production. Additional roles of LH in learning and memory functions, e.g. elevated LH impairs spatial memory of rodents ⁵¹ .
<i>Trh</i>	Thyrotropin-releasing hormone (TRH)	chr6	Primary TRH production in hypothalamic neurons. Some production and activity within the hippocampus. TRH stimulates GABA release within CA1 of the hippocampus ⁵² .
<i>Gabre</i>	The epsilon subunit of the GABA-A	chrX	The epsilon subunit of GABA-A Receptor, an inhibitory chloride channel. Agonist-independent activity produces a tonic inhibitory tone onto neurons ⁵³ . Highest in the hypothalamus.
<i>Adcy2</i>	Adenylyl cyclase 2	chr13	Stimulated by G-protein signaling and PKC. High expression in the soma and dendrites of hippocampal neurons and a proposed role in coincidence detection ⁵⁴ .
<i>Adora2a</i>	Adenosine A2a receptor	chr10	A G-protein coupled receptor of extracellular adenosine. A regulator of neurogenesis and hippocampal volume. Modulatory roles of BDNF expression and GABA and glutamate signaling in the hippocampus ⁵⁵ . Increased body mass, anxiety, and heightened aggression in <i>Adora2a</i> -KO mice ⁵⁶ .
<i>Pomc</i>	Pro-opiomelanocortin	chr12	A peptide-hormone regulating the hypothalamic function such as feeding. High expression in the hypothalamus, and lower expression in the amygdala and hippocampus. Implicated in the cognitive decline of Alzheimer's disease ³¹ .
<i>Mc3r</i>	Melanocortin 3 receptor	chr2	MC3R is receptor for cleavage products of POMC. The hypothalamic function in weight and feeding. Roles in hippocampal memory consolidation ³³ .
<i>Agt</i>	Angiotensinogen	chr8	A peptide-hormone primarily produced by astrocytes and converted into Angiotensin, neuroactive peptides. Well-known roles in vascular regulation, such as blood pressure. Angiotensin II inhibits LTP in the dentate gyrus in the hippocampus ⁵⁷ .
<i>P2ry14</i>	Purinergic receptor P2Y, G-protein coupled	chr3	G-protein coupled receptor that binds UDP-glucose.

dysregulated in DM in general. However, the slopes of linear regression were lower than 1 with statistical significance, suggesting the partial rescue effect (Fig. 5d). The mildest rescue effect was observed in 5C-DEGs in the DM amygdala (linear regression slope = 0.91 ± 0.03), while 5C-DEGs in the hippocampus and 2A-DEGs exhibit more pronounced rescue effects (slope: 0.51–0.73). These results indicate that misregulation of genes in both *Kdm5c*-KO or *Kmt2a*-HET was partially corrected in the DM brain tissues.

We then sought to isolate genes that might have contributed to the rescue effects at cellular and behavioral levels. As shown by the red circles in Fig. 5d, some DEGs exhibit stronger rescue effects than others. We selected these genes as potential drivers of rescue effects (see Methods). While 10 genes in the amygdala and 81 genes in the hippocampus drove rescue effects of 5C-DEGs, 36 genes in the amygdala and 46 genes in the hippocampus contributed to the partial restoration of normal 2A-DEGs expression in DM (Supplementary Data 2). We then performed pathway analysis on these rescue-driving genes using the Enrichr program. While 2A-rescue genes did not yield any statistically significant enrichment ($p\text{-adj} < 0.05$), 5C-rescued genes showed an enrichment of a mouse KEGG pathway, “neuroactive ligand-receptor interaction” ($p\text{-adj} = 5.60 \times 10^{-3}$, Odds ratio: 6.01). The following 10 genes contributed to the enrichment: *Pomc*, *Adcy2*, *Agt*, *Adora2a*, *Mc3r*, *Gabre*, *P2ry14*, *Tacr1*, *Trh*, and *Lhb*. Except for *P2ry14*, all these genes have known roles in learning and memory or aggression (Table 1). Many of these genes were expressed at low levels in the WT and were derepressed following the KDM5C loss (Supplementary Data 2), suggesting roles for KDM5C in suppressing aberrant gene expression.

Interestingly, most of these genes encode peptide hormones, their receptors, or downstream signaling molecules. For example,

Pro-opiomelanocortin (POMC) is a peptide-hormone primarily known for its roles in regulating hypothalamic functions, such as feeding²⁹. In addition to its high expression in the hypothalamus, *Pomc* is also expressed in the amygdala and the hippocampus³⁰. POMC signaling in these regions has been implicated in the cognitive decline of Alzheimer's disease³¹. Another gene in the list, *Mc3r*, encodes a POMC receptor. *Mc3r* is expressed in the hypothalamus and limbic structures such as the amygdala and hippocampus³². Similar to *Pomc*, *Mc3r*'s roles have been primarily studied in the hypothalamus, yet this gene has also been implicated in hippocampal memory consolidation³³. Collectively, these results raise the possibility that aberrant peptide-hormone signaling and its normalization underlie phenotypic outcomes of *Kdm5c*-KO and DM mice.

H3K4me3 landscapes in WDSTS and MRXSCJ models. We sought to determine the impact of KMT2A- and KDM5C-deficiencies and double mutation on the H3K4me3 landscape within the amygdala. In western blot analyses, global H3K4me1–3 levels were not altered dramatically in any mutant (Fig. 6a, Supplementary Fig. 9). We thus performed H3K4me3 chromatin immunoprecipitation coupled with deep sequencing (ChIP-seq) to probe local changes genome-wide. To assess the IP specificity, we spiked-in an array of recombinant nucleosomes carrying 15 common methylations along with DNA barcodes appended to the Widom601 nucleosome positioning sequence³⁴ (see Methods). The two recombinant H3K4me3 nucleosomes dominated the Widom601-containing DNA in all IP reactions with negligible signals from other methylation states such as H3K4me1 or H3K4me2 (Supplementary Fig. 10a), demonstrating a superb specificity of the ChIP.

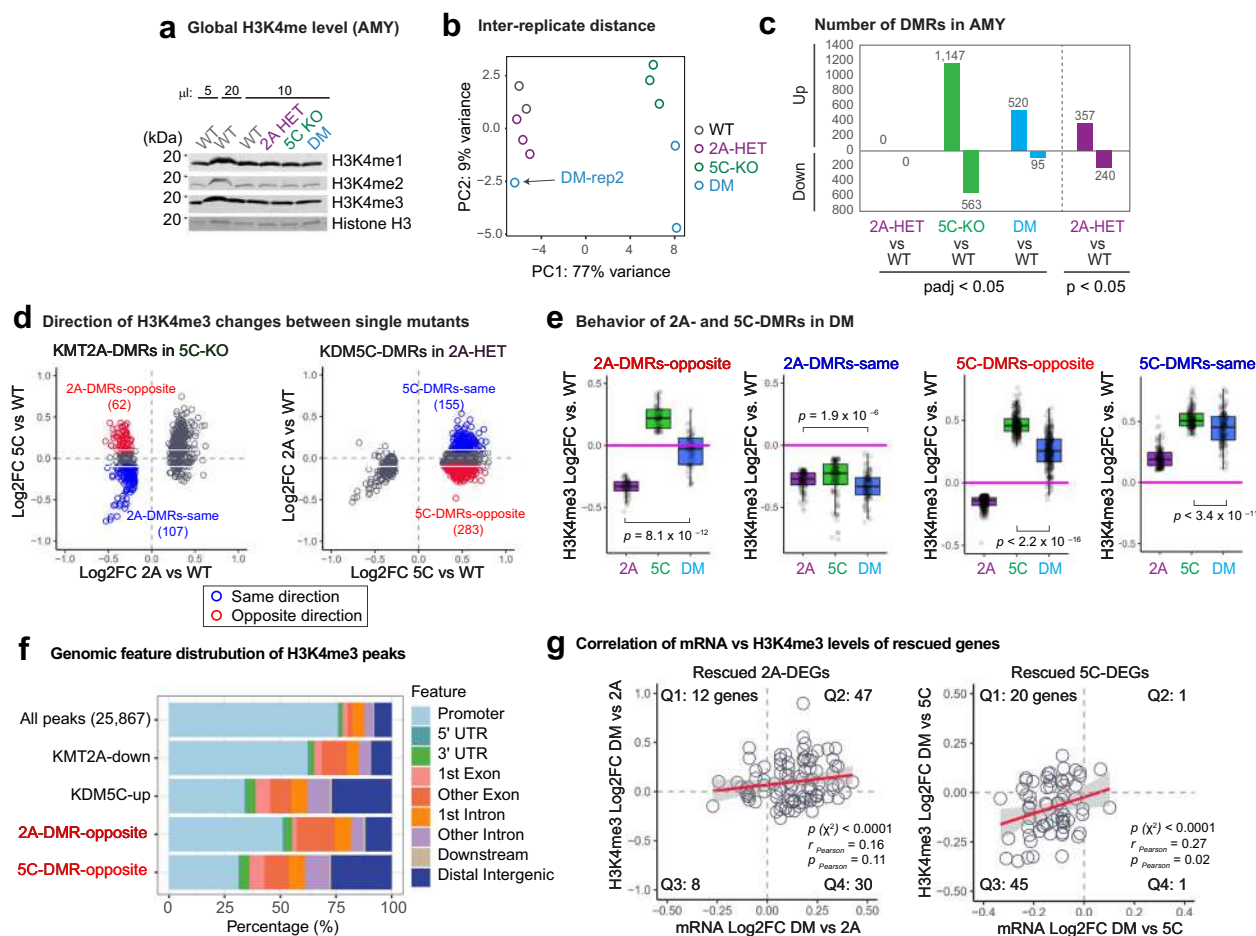


Fig. 6 Altered H3K4me3 landscapes in the amygdala and rescue effect in DM. **a** Western blot of whole-brain lysates showing unchanged global H3K4 methylation across genotypes. Total histone H3 was detected using an antibody recognizing the C-terminus of H3, and used as a control for equal loading. **b** PCA analysis of H3K4me3 ChIP-seq replicates. We analyzed amygdala tissue from 2 to 3 animals (rep1–3) for each genotype (see Methods). **c** Number of H3K4me3 DMRs in 2a-HET, 5c-KO, or DM compared to WT across the genome. 2A-HET DMRs are retrieved with a relaxed threshold ($p < 0.05$). **d** Direction of H3K4me3 changes between single mutants. Genes are colored based on the direction of misregulation between the single mutants. **e** Behavior of single-mutant DMRs in DM. Log2 fold change of DMRs relative to WT were plotted across the three mutants. Boxplot features: box: interquartile range (IQR), bold line: median, gray dots: individual genes. Associated p values result from Wilcoxon signed-rank tests. **f** Genomic features of H3K4me3 peaks. **g** Involvement of H3K4me3 restoration near rescued DEGs. H3K4me3 log2 fold changes (FC) are plotted as function of mRNA log2 FC between DM and single mutants. Red line: linear regression fitting line with 95% confidence interval (gray shade). The gene numbers fall into each of the four quadrants as indicated (Q1–Q4). Results of χ^2 test and Pearson's correlation coefficient (r) and p -value (p) are noted.

PCA analyses of H3K4me3 distribution indicated that WT and *Kmt2a*-HET are close each other, while *Kdm5c*-KO and DM cluster separately from the WT–2a-HET cluster. Reminiscent of the transcriptome data (Fig. 5), we did not recover any differentially methylated regions (DMRs) in *Kmt2a*-HET, while *Kdm5c*-KO had 1147 hypermethylated regions (Fig. 6c, Supplementary Fig. 9, p -adj < 0.05 , see Methods). In *Kdm5c*-KO, 583 loci are hypomethylated compared to WT, and these regions are highly methylated regions in WT (Fig. 6c and Supplementary Fig. 10). By relaxing the threshold, we obtained weak 2A-HET DMRs (Fig. 6c, 357 hypermethylated and 240 hypomethylated). We then examined how these single-mutant DMRs behaved in the other single mutant. Compared to the transcriptome data (Supplementary Fig. 8), we were able to recover more DMRs that are misregulated in opposite directions between the single mutants (Fig. 6d). These results suggest that H3K4me3 changes represent the action of KMT2A and KDM5C more directly compared to mRNA expression. Comparable numbers of DMRs still show same-direction H3K4me3 changes, which may again reflect indirect consequences of gene manipulations.

Rescue effect of H3K4me3 landscapes in DM. We next examined the impact of double mutations on H3K4me3 distributions. Notably, in the PCA plot, the second replicate of DM showed a stronger rescued compare to other replicates, indicating that expressivity of rescue effect varies among individual animals (Fig. 6b). The number of DMRs in DM are smaller than those of single mutants, indicating a global rescue of aberrant H3K4me3 (Fig. 6c). We then assessed how single-mutant DMRs behaved in DM. Note that, we focused on hypomethylated loci in *Kmt2a*-HET and hypermethylated loci in *Kdm5c*-KO (colored loci in Fig. 6d) based on their enzymatic activities. The opposite-direction 2A-DMRs showed complete normalization in DM, while the same-direction 2A-DMRs were even more hypomethylated in DM (Fig. 6e). Likewise, the opposite-direction 5C-DMRs showed more pronounced rescue effect in DM compared to same-direction 5C-DMRs (Fig. 6e). This direction-dependent rescue effect persisted even when we omitted DM rep2 from the analysis (Supplementary Fig. 11). These results strongly support the idea that KMT2A and KDM5C counteract to normalize H3K4me3 levels in specific genomic loci.

Peak annotation revealed that rescued DMRs tend to be outside the promoters, such as distal intergenic regions, introns, and internal exons (Fig. 6f). ChIP-seq tracks of exemplary loci are represented in Supplementary Fig. 12. Finally, we tested whether the rescue effects in gene expression involve normalization of H3K4me3. We took all rescued 2A-DEGs and plotted DM vs 2A fold changes of H3K4me3 as a function of DM vs 2A mRNA changes (Fig. 6g). Rescued 2A-DEGs mostly showed an increase in mRNA levels in DM (Q2 and Q4). When mRNA expression increases from 2A-HET to DM, H3K4me3 levels also increase, which results in the larger number of genes within the upper right quadrant of the plot (Q2, 47 genes, $p < 1.0 \times 10^{-4}$, χ^2 test). Similarly, when mRNA expression decreases from 5C-KO to DM, the majority of genes are accompanied by decreased H3K4me3 nearby (Q3: 45 genes vs Q1: 20 genes, $p < 1.0 \times 10^{-4}$, χ^2 test). Furthermore, the magnitude of mRNA and H3K4me3 changes show positive correlations (Pearson $r = 0.16$, and $r = 0.27$ for 2A- and 5C-DEGs, respectively). Thus, misregulation of mRNA expression and its partial correction involve corresponding restoration of the H3K4me3 levels.

Discussion

The present work, to our knowledge, represents the first genetic interactions between mammalian methyl histone writer and eraser in vivo. Interplay of opposing chromatin-modifying enzymes has been characterized in several biological processes and species. For example, DNMT3A DNA methyltransferase and TET2 dioxygenase, which oppose over DNA CpG methylation, can both counteract and cooperate to regulate gene expression in hematopoietic stem cells³⁵. Set1 and Jhd2, the sole H3K4me writer-eraser pair in yeast, have been shown to co-regulate transcription³⁶. However, a fundamental question remained — is there any specific writer-eraser pairing in highly duplicated gene families for a single chromatin modification? Mishra et al. showed that KDM5A antagonizes KMT2A, KMT2B, and KMT2D to modulate the transient site-specific DNA copy number gains in immortalized human cells³⁷. Cao et al.³⁸ found that failed differentiation of mouse embryonic stem cells due to *Kmt2d* deletion can be rescued by *Kdm1a* knockdown. These pioneering efforts identified functional interplay between the opposing enzymes in vitro; however, no in vivo study has been reported. Thus, the present study substantially advances our understanding of how methyl-histone enzymes functionally interact.

Brain development is particularly relevant to the H3K4me dynamics, because a cohort of neurodevelopmental disorders has been genetically associated with impaired functions of these enzymes, as discussed earlier. Unlike previous studies using chemical approaches that block multiple chromatin regulators^{13–15}, we demonstrated that manipulation of a single enzyme, KMT2A or KDM5C, is sufficient to reverse many neurological traits in both of the two single-mutant models. This study motivates interrogations of human populations to test if damaging mutations in writer and eraser enzymes can coincide in unaffected individuals. Our work also opens a new avenue for future studies to delineate the full interplay between the H3K4me-regulatory enzymes.

Several challenges remain, especially in linking molecular functions of KMT2A and KDM5C to cellular and behavioral outcomes. First, we measured gene expression and H3K4me3 in adult brain tissues, a mixture of many neuron and glia types, which may mask potentially important molecular changes. Increasing spatiotemporal resolution of the molecular study is an important future direction. Second, histone modifying enzymes, including KDM5C, can exert non-enzymatic function^{11,39}. Although it has not been reported, there might be a non-histone

substrate for KMT2A and KDM5C, as shown in other histone modifying enzymes¹². Thus, our study does not rule out the impact of these non-canonical roles of the two enzymes. Finally, in a fly model of KMD5-intellectual disability^{40,41}, impaired intestinal barrier and the altered microbiota contribute to abnormal social behavior, pointing to a non-tissue-autonomous mechanism⁴². Future studies are warranted to isolate the causal events for observed rescue effects. The first step would be to test the functional contribution of candidate genes, many of which encode peptide-hormone signaling factors (Table 1).

Increased social dominance is a novel behavioral trait we observed in both WDSTS and MRXSCJ mouse models. The amygdala is well known to mediate social behaviors. For example, lesions of BLA result in decreased aggression-like behavior and increased social interactions, and changes in transcriptional regulation in BLA are observed after social interactions⁴³. The dorsal hippocampus CA1 is a direct recipient region of BLA inputs²⁶. Decreased BLA and CA1 spine densities in *Kmt2a*-HET and *Kdm5c*-KO mice inversely correlate with increased social dominance and aggression (Figs. 3, 4). Together, these observations imply that decreased spine density is not a cause of increased social dominance, but rather reflects compensatory reduction of net synaptic strength due to increased excitation and/or a loss of inhibitory control in this circuit. Thus, determining the connectivity of the amygdala with other regions, including prefrontal, infralimbic, and orbitofrontal cortices as well as the ventral hippocampus, will be critical for understanding the changes in social behaviors in both WDSTS and MRXSCJ models.

It is important to note that the double mutations introduced in our mice were constitutive, and therefore a lifetime of adaptation to loss of these two major chromatin regulators may occur from early developmental stages. A more realistic therapeutic strategy may be acute inhibition of KDM5C or KMT2A in the juvenile or mature brain. Previous work characterizing mouse models with excitatory-neuron specific gene ablation via *CamKII*-Cre found that conditional *Kmt2a* deletion led to clear learning deficits²⁰, while cognitive impairments in the conditional *Kdm5c*-KO mice were much milder than those of constitutive *Kdm5c*-KO mice²². These results suggest a developmental origin of phenotypes in *Kdm5c*-KO. Future investigations are needed to address whether the effects of acute inhibition of opposing enzymes in these mouse models can restore such neurodevelopmental deficits.

Methods

Statistics and reproducibility. The proposed study was conducted with varied numbers of individual animals depending on the experiments. Data acquisition and analysis were conducted blindly except for molecular measurements including western blots and genomics analyses. We did not remove any particular data points for their acquisition or analyses. Statistical tests were chosen based on the distribution of the data. Details of statistics and sampling are outlined below in each section.

Mouse. The *Kdm5c*-KO allele was previously described and maintained in C57BL/6J congenic background²¹. *Kmt2a*-HET mice were generated by crossing previously described *Kmt2a*-flox (exons 8 and 9) mice with B6.129-Gt(ROSA)26Sor^{tm1(Cre)ERT2}/Tyj-J-Cre mice⁴⁴. Our strategy was to use F1 hybrid for all studies as previously recommended as a standard practice to eliminate deleterious homozygous mutations, which can result in abnormalities in the congenic lines, e.g. deafness in C57/BL6⁴⁵. We backcrossed *Kmt2a*^{+/−} mice onto the desired 129S1/SvImJ strain, by marker-assisted accelerated backcrossing through Charles River Labs. *Kmt2a*^{+/−} mice were bred to the N4 generation at minimum, where mice were >99% congenic for 129S1/SvImJ. All experimental mice were generated as F1 generation hybrids from mating between 129S1/SvImJ *Kmt2a*^{+/−} males and C57BL/6 *Kdm5c*^{+/−} females: WT males (*Kmt2a*^{+/+}, *Kdm5c*^{+/y}); *Kdm5c*-KO males (*Kmt2a*^{+/+}, *Kdm5c*^{−/y}); *Kmt2a*-HET males (*Kmt2a*^{+/−}, *Kdm5c*^{+/y}); and *Kdm5c*-*Kmt2a*-DM males (*Kmt2a*^{+/−}, *Kdm5c*^{−/y}). Genotypes were confirmed using the following primers: for *Kmt2a*, 5'-GCCAGTCAGTCCGAAAGTAC-3', 5'-AGGATGTTCAAAGTGCCTGC-3', 5'-GCTCTAGAACTAGTGATCCCC-3'; for *Kdm5c*, 5'-CAGGTGGCTTACTGTGACATTGATG-3', 5'-TGGGTTTGAGGGATACTTTAGG-3', 5'-GGTCTCAACACTCACATAGTG-3'.

All mouse studies complied with the protocols (PRO00008568: Iwase and PRO00008807: Tronson) by the Institutional Animal Care & Use Committee (IACUC) of The University of Michigan.

Western blot analysis. Total proteins from adult brain tissues were subjected to western blot analysis using in-house anti-KDM5C²¹ and anti-GAPDH antibodies (G-9, Santa Cruz). For histone proteins, nuclei were enriched from the Dounce-homogenized brain tissues using Nuclei EZ prep Kit (Sigma, NUC-101). DNA were digested with micrococcal nuclease (MNase, NEB) for 10 min at room temperature, and total nuclear proteins were extracted by boiling the samples with the SDS-PAGE sample buffer. The following antibodies were used for western blot analyses: anti-H3K4me3 (Abcam, ab8580, 1:1000), anti-H3K4me2 (Thermo, #710796, 1:1000), anti-H3K4me1 (Abcam, ab8895, 1:1000), and anti-H3 C-terminus (Millipore, CS204377, 1:2000).

Brain histology. Mice were subjected to transcardial perfusion according to standard procedures. Fixed brains were sliced on a freeze microtome, yielding 30 μ m sections that were then fixed, permeabilized, blocked, and stained with DAPI. Slides were imaged on an Olympus SZX16 microscope, with an Olympus U-HGLGPS fluorescence source and Q Imaging Retiga 6000 camera. Images were captured using Q-Capture Pro 7 software. Data were collected in a blind fashion, where samples were coded and genotypes only revealed after data collection was complete.

Behavioral paradigms. Prior to behavioral testing, mice were acclimated to the animal colony room for 1 week single-housing in standard cages provided with a lab diet and water ad libitum. A 12-h light–dark cycle (7:00 a.m.–7:00 p.m.) was utilized with temperature and humidity maintained at $20 \pm 2^\circ\text{C}$ and $>30\%$, respectively. The University of Michigan Committee on the Use and Care of Animals approved all tests performed in this research. Five tests, listed in order of testing, were performed: Novel Object Recognition (5 days), Context Fear Conditioning (2 days), Three-Chambered Social Interaction (2 days), Social Dominance Tube Test (3–4 days), and Resident-Intruder (2–3 days). All testing was conducted in the morning by experimenters blind to genotype. The cleaning agent used in every test between each trial was 70% ethanol. Data were collected in a blind fashion, where mice were coded and genotypes were only revealed after testing was complete.

Contextual fear conditioning: mice were placed into a distinct context with white walls ($9\frac{1}{4} \times 12\frac{1}{4} \times 9\frac{1}{4}$ in) and a 36 steel rod grid floor ($1/8$ in diameter; $\frac{1}{4}$ spaced apart) (Med-Associates, St. Albans, VT) and allowed to explore for three minutes, followed by a 2-s 0.8 mA shock, after which mice were immediately returned to their home cages in the colony room. Twenty-four hours later, mice were returned to the context and freezing behavior was assessed with NIR camera (VID-CAM-MONO-2A) and VideoFreeze (MedAssociates, St. Albans, VT). Freezing levels were compared between genotypes using a between-groups analysis (one-way ANCOVA) with genotype as the between-subjects factor, and “cohort” as the covariate, to reduce variability as a result of multiple cohorts. Planned comparisons between genotypes were conducted, with Bonferroni correction for multiple comparisons.

Novel object recognition: mice were first habituated to testing arenas ($40 \times 30 \times 32.5$ cm³) in three, 10-min sessions over six consecutive days. Twenty-four hours later, mice were allowed to explore two identical objects (a jar or egg, counterbalanced across animals) for two, 10-min trials spaced 3 h apart. All animals were returned to the arena, tested 24 h after the first training session, and presented with one training object (“familiar” object: jar or egg) and one “novel” object (egg or jar). Exploration of the objects was defined as nose-point (sniffing) within 2 cm of the object. Behavior was automatically measured by Ethovision XT9 software using a Euresys Pico U4H.264No/0 camera (Noldus, Cincinnati, OH). Preference was calculated as the time spent exploring novel object/total time exploring both objects. One-sample Wilcoxon signed-rank tests against 50% (no preference) was used to establish whether animals remembered the original objects.

Three-chambered social interaction: mice were placed into a three-chambered apparatus consisting of one central chamber ($24 \times 20 \times 30$ cm³) and two identical side chambers ($24.5 \times 20 \times 30$ cm³) each with a containment enclosure (8 cm diameter; 18 cm height; gray stainless steel grid 3 mm diameter spaced 7.4 mm apart) and allowed to habituate for 10 min. Twenty-four hours later, mice were returned to the apparatus that now included a 2–3-month-old stranger male mouse (C57BL/6N) on one side of the box (“stranger”), and a toy mouse approximately the same size and color as the stranger mouse on the other (“toy”). Exploration of either the stranger or toy was defined as nose-point (sniffing) within 2 cm of the enclosure and used as a measure of social interaction. Behavior was automatically scored by Ethovision XT9 software as described above, and social preference was defined as time exploring stranger/total time spent exploring (stranger + toy). One-sample Wilcoxon signed-rank tests against 50% (no preference) was used to establish whether animals remembered the original objects. Differences between genotypes were analyzed using an ANCOVA with cohort as a covariate. Planned comparisons with Bonferroni correction for multiple comparisons were used to assess differences between genotypes.

Social dominance tube test: twenty-four hours prior to testing, mice were habituated to a plastic clear cylindrical tube (1.5 in diameter; 50 cm length) for 10 min. During the test, two mice of different genotypes were placed at opposite ends of the tube and allowed to walk to the middle. The match concluded when the one mouse (the dominant mouse) forced the other mouse (the submissive mouse) to retreat with all four paws outside of the tube (a “win” for the dominant mouse). Each mouse underwent a total of three matches against three different opponents for counterbalancing. Videos were recorded by Ethovision XT9 software as described above, and videos were manually scored by trained experimenters blind to genotype. The number of “wins” was reported as a percentage of total number of matches. Data were analyzed using an Exact Binomial Test with 0.5 as the probability of success (win or loss).

Resident-intruder aggression: resident-intruder tests were used to assess aggression. Tests were performed on consecutive days, where the resident mouse was exposed to an unfamiliar intruder mouse for 15 min. A trial was terminated prematurely if blood was drawn, if an attack lasted continuously for 30 s, or if an intruder showed visible signs of injury after an attack. Resident mice were assessed for active aggression (darting, mounting, chasing/following, tail rattling, and boxing/parrying), as well as submissive behaviors (cowering, upright, and running away). Intruder mice were assessed for passive defense (freezing, cowering, and digging). Behavior was recorded and videos scored manually by experimenters blind to genotype. A repeated measures analysis, with cohort as a covariate, was used for each aggressive (genotype \times aggression measures ANOVA) and submissive behavior (genotype \times submissive) to analyze aggressive behaviors. Planned comparisons for genotype, with Bonferroni corrections for multiple comparisons were used to further analyze specific effects of genotype.

Neuronal Golgi-Cox staining and morphological analyses. Brains from adult (2–8 months) mice were dissected and incubated in a modified Golgi-Cox solution for two weeks at room temperature. The remaining procedure of Golgi-Cox immersion, cryosectioning, staining and coverslipping was performed as described previously²¹. Four animals were used for each genotype, and pyramidal neurons in the basolateral amygdala and dorsal hippocampus CA1 per animal were quantified: $N = 24$ neurons for WT, *Kmt2a*-HET and *Kdm5c*-KO, and $N = 27$ neurons for DM. Quantification was done using commercially available software, NeuroLucida (v10, MicroBrightfield, VT), installed on a Dell PC workstation that controlled a Zeiss Axioplan microscope with a CCD camera (1600×1200 pixels) and with a motorized X, Y, and Z focus for high-resolution image acquisition ($\times 100$ oil immersion) and quantifications. The morphological analyses included: dendritic lengths, spine counts, density of overall spine and subtypes. All sample genotypes were blinded to the analysts throughout the course of the analysis.

The criteria for selecting candidate neurons for analysis were based on¹: visualization of a completely filled soma with no overlap of neighboring soma and completely filled dendrites², the tapering of most distal dendrites; and³ the visualization of the complete 3-D profile of dendritic trees using the 3-D display of the imaging software.

For quantitative analysis of spine subtypes (thin, stubby, mushroom, filopodia, and branched spines), only spines orthogonal to the dendritic shaft were included in this analysis, whereas spines protruding above or beneath the dendritic shaft were not sampled. This principle remained consistent throughout the course of analysis.

After completion, the digital profile of neuron morphology was extrapolated and transported to a multi-panel computer workstation, then quantitated using NeuroExplorer program (MicroBrightfield, VT), followed by statistical analysis (one- and two-way ANOVAs, $p < 0.05$).

RNA-seq. Brains from adult (4.5–8 months) male mice were microdissected to obtain the amygdala and hippocampus from Bregma ~ 4.80 mm regions. $N = 4$ animals were used per genotype. The ages of mice used for genomics study, RNA-seq and ChIP-seq, are summarized in Supplementary Data 3. Tissue was homogenized in Tri Reagent (Sigma). Samples were subjected to total RNA isolation, and RNA was purified using RNeasy Mini Kit (Qiagen). ERCC spike-in RNA was added at this stage, according to manufacturer’s instructions (Life Technologies). Libraries were prepared using the NEBNext® Ultra™ II Directional RNA Library Prep Kit with oligo-dT priming. Multiplexed libraries were pooled in approximately equimolar ratios and purified using Agencourt RNAClean XP beads (Beckman Coulter).

Libraries were sequenced on the Illumina Novaseq 6000 platform, with paired-end 150 base-pair reads (24–35 million reads/library), according to standard procedures. Reads were mapped to the mm10 mouse genome (Gencode) using STAR (v2.5.3a), where only uniquely mapped reads were used for downstream analyses. Duplicates were removed by STAR, and a counts file was generated using FeatureCounts (Subread v1.5.0). BAM files were converted to bigwigs using deeptools (v3.1.3). Differentially expressed (DE) genes were called using DESeq2 (v1.14.1). Data analyses were performed with RStudio (v1.0.136). Fold change heatmaps were created using gplots heatmap2 function.

To validate the microdissection of hippocampus and amygdala, we compared our RNA-seq datasets with similar RNA-seq data from Arbeitman²⁷ datasets, which involved the cerebellum, cortex, hippocampus, and amygdala. Briefly, count data underwent variance stabilizing transformation via DESeq2 vst function and

Euclidean distances of the transformed values were calculated by `dist` command and the heatmap was generated by the `pheatmap` function. Linear regression analysis was performed using the `smr` v3.4–8 `slope.test` function with `intercept = FALSE` and `robust = FALSE` options. Rescue-driving genes were chosen as genes that satisfy two conditions using R, (1) $|\text{abs}(\log_2\text{FC}(\text{single mutant vs DM}))| > 2$, (2) $|\text{abs}(\log_2\text{FC}(\text{DM vs WT}))| < 0.7$.

ChIP-seq. Amygdala tissues were microdissected from adult (8–14.5 months) male mice. $N = 2$ animals were used for WT, and $N = 3$ animals were used for *Kmt2a*-HET, *Kdm5c*-KO, and DM as biological replicates. Nuclei were isolated using a Nuclei EZ prep Kit (Sigma, NUC-101), and counted after Trypan blue staining. Approximately 20,000 nuclei for each replicate were subjected to MNase digestion as previously described⁴⁶. We essentially followed the native ChIP-seq protocol⁴⁶ with two modifications. One was to use a kit to generate sequencing libraries in one-tube reactions (NEB, E7103S). Another modification was to spike-in the panel of synthetic nucleosomes carrying major histone methylations (EpiCypher, SKU: 19–1001)³⁴. For ChIP, we used the rabbit monoclonal H3K4me3 antibody (Thermo, clone #RM340, 2 μg).

Libraries were sequenced on the Illumina NextSeq 500 platform, with single-end 75 base-pair sequencing, according to standard procedures. We obtained 20–59 million reads per sample. Reads were aligned to the mm10 mouse genome (Gencode) and a custom genome containing the sequences from our standardized, synthetic nucleosomes (EpiCypher) for normalization, using Bowtie allowing up to two mismatches. Only uniquely mapped reads were used for analysis. The range of uniquely mapped reads for input samples was 38–44 million reads. All IP replicates had a mean of 9.1 million uniquely mapped reads (range: 7.4–13.9 million). The enrichment of mapped synthetic spike-in nucleosomes compared to input was calculated and used as a normalization coefficient for read depth of each ChIP-seq replicate.

Peaks were called using MACS2 software (v 2.1.0.20140616) using input BAM files for normalization, with filters for a q -value < 0.1 and a fold enrichment > 1 . Common peak sets were obtained via DiffBind, and count tables for the common peaks were generated with the `Bedtools multicov` command. We removed “blacklist” regions that often give aberrant signals. Resulting count tables were piped into DESeq2 to identify DMRs incorporating the synthetic nucleosome normalization into the read depth factor. We used ChIPseeker to annotate H3K4me3 peaks with genomic features including mm10 promoters (defined here as ± 1 kb from annotated transcription start site [TSS]). Normalized bam files were converted to bigwigs for visualization in the UCSC genome browser. Genes near peaks were identified by ChIPseeker. RNA-seq and ChIP-seq data were integrated using standard R commands and rescued amygdala DEGs were chosen as genes that meet two criteria (1), $|\text{abs}(\log_2\text{FC}(\text{single mutant vs DM}))| > 1$, (2) $|\text{abs}(\log_2\text{FC}(\text{DM vs WT}))| < 0.7$. All scripts used in this study are available upon request.

Data availability

The RNA-seq and ChIP-seq are available in NCBF's Gene Expression Omnibus⁴⁷. Accession numbers are GSE127722 for RNA-seq, GSE127817 for ChIP-seq and GSE127818 for SuperSeries.

Received: 21 April 2020; Accepted: 9 May 2020;

Published online: 01 June 2020

References

1. Faundes, V. et al. Histone lysine methylases and demethylases in the landscape of human developmental disorders. *Am. J. Hum. Genet.* **102**, 175–187 (2018).
2. Kouzarides, T. Chromatin modifications and their function. *Cell* **128**, 693–705 (2007).
3. Iwase, S. & Shi, Y. Histone and DNA modifications in mental retardation. *Prog. Drug Res.* **67**, 147–173 (2011).
4. Barski, A. et al. High-resolution profiling of histone methylations in the human genome. *Cell* **129**, 823–837 (2007).
5. Heintzman, N. D. et al. Distinct and predictive chromatin signatures of transcriptional promoters and enhancers in the human genome. *Nat. Genet.* **39**, 311–318 (2007).
6. Vermeulen, M. et al. Selective anchoring of TFIID to nucleosomes by trimethylation of histone H3 lysine 4. *Cell* **131**, 58–69 (2007).
7. Laubert, S. M. et al. H3K4me3 interactions with TAF3 regulate preinitiation complex assembly and selective gene activation. *Cell* **152**, 1021–1036 (2013).
8. Local, A. et al. Identification of H3K4me1-associated proteins at mammalian enhancers. *Nat. Genet.* **50**, 73–82 (2018).
9. Allis, C. D. et al. New nomenclature for chromatin-modifying enzymes. *Cell* **131**, 633–636 (2007).
10. Vallianatos, C. N. & Iwase, S. Disrupted intricacy of histone H3K4 methylation in neurodevelopmental disorders. *Epigenomics* **7**, 503–519 (2015).
11. Aubert, Y., Egolf, S. & Capell, B. C. The unexpected noncatalytic roles of histone modifiers in development and disease. *Trends Genet.* **35**, 645–657 (2019).
12. Zhang, X., Wen, H. & Shi, X. Lysine methylation: beyond histones. *Acta Biochim. Biophys. Sin.* **44**, 14–27 (2012).
13. Alarcon, J. M. et al. Chromatin acetylation, memory, and LTP are impaired in CBP \pm mice: a model for the cognitive deficit in Rubinstein-Taybi syndrome and its amelioration. *Neuron* **42**, 947–959 (2004).
14. Bjornsson, H. T. et al. Histone deacetylase inhibition rescues structural and functional brain deficits in a mouse model of Kabuki syndrome. *Sci. Transl. Med.* **6**, 256ra135 (2014).
15. Park, J., Thomas, S. & Munster, P. N. Epigenetic modulation with histone deacetylase inhibitors in combination with immunotherapy. *Epigenomics* **7**, 641–652 (2015).
16. Jones, W. D. et al. De novo mutations in MLL cause wiedemann-steiner syndrome. *Am. J. Hum. Genet.* **91**, 358–364 (2012).
17. Jensen, L. R. et al. Mutations in the JARID1C gene, which is involved in transcriptional regulation and chromatin remodeling, cause X-linked mental retardation. *Am. J. Hum. Genet.* **76**, 227–236 (2005).
18. Gupta, S. et al. Histone methylation regulates memory formation. *J. Neurosci.* **30**, 3589–3599 (2010).
19. Jakovcevski, M. et al. Neuronal Kmt2a/Mll1 histone methyltransferase is essential for prefrontal synaptic plasticity and working memory. *J. Neurosci.* **35**, 5097–5108 (2015).
20. Kerimoglu, C. et al. KMT2A and KMT2B mediate memory function by affecting distinct genomic regions. *Cell Rep.* **20**, 538–548 (2017).
21. Iwase, S. et al. A mouse model of x-linked intellectual disability associated with impaired removal of histone methylation. *Cell Rep.* **14**, 1000–1009 (2016).
22. Scandaglia, M. et al. Loss of Kdm5c causes spurious transcription and prevents the fine-tuning of activity-regulated enhancers in neurons. *Cell Rep.* **21**, 47–59 (2017).
23. Cao, F. et al. Targeting MLL1 H3K4 methyltransferase activity in mixed-lineage leukemia. *Mol. Cell* **53**, 247–261 (2014).
24. Varholick, J. A., Bailoo, J. D., Palme, R. & Würbel, H. Phenotypic variability between Social Dominance Ranks in laboratory mice. *Sci. Rep.* **8**, 6593 (2018).
25. Penzes, P., Cahill, M. E., Jones, K. A., VanLeeuwen, J. E. & Woolfrey, K. M. Dendritic spine pathology in neuropsychiatric disorders. *Nat. Neurosci.* **14**, 285–293 (2011).
26. Yang, Y. & Wang, J. Z. From structure to behavior in basolateral amygdala-hippocampus circuits. *Front. Neural Circuits* **11**, 86 (2017).
27. Arbeitman, M. N. Maternal experience leads to lasting gene expression changes in some regions of the mouse brain. *G3* **9**, 2623–2628 (2019).
28. Outchkourov, N. S. et al. Balancing of histone H3K4 methylation states by the Kdm5c/SMCX histone demethylase modulates promoter and enhancer function. *Cell Rep.* **3**, 1071–1079 (2013).
29. Civelli, O., Birnberg, N. & Herbert, E. Detection and quantitation of pro-opiomelanocortin mRNA in pituitary and brain tissues from different species. *J. Biol. Chem.* **257**, 6783–6787 (1982).
30. Palasz, A., Bandyszewska, M., Rojczyk, E. & Wiaderkiewicz, R. Effect of extended olanzapine administration on POMC and neuropeptide Y mRNA levels in the male rat amygdala and hippocampus. *Pharmacol. Rep.* **68**, 292–296 (2016).
31. Shen, Y. et al. Stimulation of the hippocampal POMC/MC4R circuit alleviates synaptic plasticity impairment in an Alzheimer's disease model. *Cell Rep.* **17**, 1819–1831 (2016).
32. Roselli-Rehfs, L. et al. Identification of a receptor for gamma melanotropin and other proopiomelanocortin peptides in the hypothalamus and limbic system. *Proc. Natl Acad. Sci. USA* **90**, 8856–8860 (1993).
33. Machado, I., González, P., Schiöth, H. B., Lasaga, M. & Scimonelli, T. N. α -Melanocyte-stimulating hormone (α -MSH) reverses impairment of memory reconsolidation induced by interleukin-1 beta (IL-1 beta) hippocampal infusions. *Peptides* **31**, 2141–2144 (2010).
34. Shah, R. N. et al. Examining the roles of H3K4 methylation states with systematically characterized antibodies. *Mol. Cell* **72**, 162–177, e7 (2018).
35. Zhang, X. et al. DNMT3A and TET2 compete and cooperate to repress lineage-specific transcription factors in hematopoietic stem cells. *Nat. Genet.* **48**, 1014–1023 (2016).
36. Ramakrishnan, S. et al. Counteracting H3K4 methylation modulators Set1 and Jhd2 co-regulate chromatin dynamics and gene transcription. *Nat. Commun.* **7**, 11949 (2016).
37. Mishra, S. et al. Cross-talk between lysine-modifying enzymes controls site-specific DNA amplifications. *Cell* **175**, 1716 (2018).
38. Cao, K. et al. An Mll4/COMPASS-Lsd1 epigenetic axis governs enhancer function and pluripotency transition in embryonic stem cells. *Sci. Adv.* **4**, eaap8747 (2018).
39. Vallianatos, C. N. et al. Altered gene-regulatory function of KDM5C by a novel mutation associated with autism and intellectual disability. *Front. Mol. Neurosci.* **11**, 104 (2018).

40. Liu, X. & Secombe, J. The histone demethylase KDM5 activates gene expression by recognizing chromatin context through Its PHD reader motif. *Cell Rep.* **13**, 2219–2231 (2015).
41. Zamurrad, S., Hatch, H. A. M., Drelon, C., Belalcázar, H. M. & Secombe, J. A Drosophila model of intellectual disability caused by mutations in the histone demethylase KDM5. *Cell Rep.* **22**, 2359–2369 (2018).
42. Chen, K. et al. Drosophila histone demethylase KDM5 regulates social behavior through immune control and gut microbiota maintenance. *Cell Host Microbe* **25**, 537–552, e8 (2019).
43. McCann K. E., Sinkiewicz D. M., Rosenhauer A. M., Beach L. Q., & Huhman K. L. Transcriptomic analysis reveals sex-dependent expression patterns in the basolateral amygdala of dominant and subordinate animals after acute social conflict. *Mol. Neurobiol.* <https://doi.org/10.1007/s12035-018-1339-7> 2018.
44. McMahon, K. A. et al. Mll has a critical role in fetal and adult hematopoietic stem cell self-renewal. *Cell Stem Cell* **1**, 338–345 (2007).
45. Silva, A. J. et al. Mutant mice and neuroscience: recommendations concerning genetic background. Banbury Conference on genetic background in mice. *Neuron* **19**, 755–759 (1997).
46. Brind'Amour, J. et al. An ultra-low-input native ChIP-seq protocol for genome-wide profiling of rare cell populations. *Nat. Commun.* **6**, 6033 (2015).
47. Edgar, R., Domrachev, M. & Lash, A. E. Gene expression omnibus: NCBI gene expression and hybridization array data repository. *Nucleic Acids Res.* **30**, 207–210 (2002).
48. Warton, D. I., Wright, I. J., Falster, D. S. & Westoby, M. Bivariate line-fitting methods for allometry. *Biol. Rev.* **81**, 259–291 (2006).
49. Sener, E. F. et al. Altered global mRNA expressions of pain and aggression related genes in the blood of children with autism spectrum disorders. *J. Mol. Neurosci.* **67**, 89–96 (2019).
50. De Felipe, C. et al. Altered nociception, analgesia and aggression in mice lacking the receptor for substance P. *Nature* **392**, 394–397 (1998).
51. Burnham, V., Sundby, C., Laman-Maharg, A. & Thornton, J. Luteinizing hormone acts at the hippocampus to dampen spatial memory. *Horm. Behav.* **89**, 55–63 (2017).
52. Deng, P. Y., Porter, J. E., Shin, H. S. & Lei, S. Thyrotropin-releasing hormone increases GABA release in rat hippocampus. *J. Physiol.* **577**, 497–511 (2006).
53. Neelands, T. R., Fisher, J. L., Bianchi, M. & Macdonald, R. L. Spontaneous and gamma-aminobutyric acid (GABA)-activated GABA(A) receptor channels formed by epsilon subunit-containing isoforms. *Mol. Pharmacol.* **55**, 168–178 (1999).
54. Baker, L. P. et al. Regulation and immunohistochemical localization of betagamma-stimulated adenylyl cyclases in mouse hippocampus. *J. Neurosci.* **19**, 180–192 (1999).
55. Vaz, S. H., Lérias, S. R., Parreira, S., Diógenes, M. J. & Sebastião, A. M. Adenosine A2A receptor activation is determinant for BDNF actions upon GABA and glutamate release from rat hippocampal synaptosomes. *Purinergic Signal.* **11**, 607–612 (2015).
56. Ledent, C. et al. Aggressiveness, hypoalgesia and high blood pressure in mice lacking the adenosine A2a receptor. *Nature* **388**, 674–678 (1997).
57. Denny, J. B., Polan-Curtain, J., Wayner, M. J. & Armstrong, D. L. Angiotensin II blocks hippocampal long-term potentiation. *Brain Res.* **567**, 321–324 (1991).

Acknowledgements

We thank Dr. Ken Kwan, Mandy Lam, and Own Funk for their assistance with the RNA-seq library preparation protocol and use of their microscope; Chris Gates for his assistance with RNA-seq analyses; and Clara Farrehi, Jordan Rich, and Demetri Tsurakis for their assistance with experiments for transcriptome analyses, global histone methylation

western blots, and brain histology, respectively. We also thank Drs. Sally Camper, Stephen Parker, Stephanie Bielas, and Michael-Christopher Keogh, as well as the members of the Iwase and Bielas labs, for helpful discussions and critical review of the data. This work was funded by an NIH National Research Service Award T32-GM07544 (University of Michigan Predoctoral Genetics Training Program) from the National Institute of General Medicine Sciences (to C.N.V.), an NIH National Research Service Award T32-HD079342 (University of Michigan Predoctoral Career Training in the Reproductive Sciences Program) from the National Institute of Child Health and Human Development (NICHD) (to C.N.V.), University of Michigan Rackham Predoctoral Research Grants (to C.N.V.), a Michigan Institute for Clinical and Health Research fellowship (Translational Research Education Certificate, supported by UL1TR000433 and UL1TR002240) (to C.N.V.), a University of Michigan Rackham Predoctoral Fellowship award (to C.N.V.), an Autism Science Foundation Predoctoral Fellowship award (to C.N.V.), an NIH National Research Service Award. F31NS103377 from the National Institute of Neurological Disease & Stroke (NINDS) (to R.S.P.), NIH NINDS Awards (R01NS089896 and R21NS104774) (to S.I.), Basil O'Connor Starter Scholar Research Awards from March of Dimes Foundation (to S.I.), and a Farrehi Family Foundation Grant (to S.I.).

Author contributions

C.N.V., N.C.T., and S.I. conceived the study and designed the experiments. B.R. and K.M.C. performed the mouse behavioral tests under the guidance of N.C.T. M.C.W. oversaw dendritic morphometry analyses. C.N.V., K.M.B., P.M.G., and S.I. analyzed RNA-seq data. Y.A.S. performed global H3K4me3 analyses. R.S.P. and S.I. performed H3K4me3 ChIP-seq and analyses. C.N.V. performed the rest of experiments and analyses. Y.D. and C.E.K. provided key experimental recourse and made important intellectual contributions. C.N.V., M.C.W., R.S.P., C.E.K., N.C.T., and S.I. wrote and edited the manuscript.

Competing interests

M.C.W. is CEO of Neurodigitech, LLC. The other authors declare no conflict of interest.

Additional information

Supplementary information is available for this paper at <https://doi.org/10.1038/s42003-020-1001-6>.

Correspondence and requests for materials should be addressed to N.C.T. or S.I.

Reprints and permission information is available at <http://www.nature.com/reprints>

Publisher's note Springer Nature remains neutral with regard to jurisdictional claims in published maps and institutional affiliations.



Open Access This article is licensed under a Creative Commons Attribution 4.0 International License, which permits use, sharing, adaptation, distribution and reproduction in any medium or format, as long as you give appropriate credit to the original author(s) and the source, provide a link to the Creative Commons license, and indicate if changes were made. The images or other third party material in this article are included in the article's Creative Commons license, unless indicated otherwise in a credit line to the material. If material is not included in the article's Creative Commons license and your intended use is not permitted by statutory regulation or exceeds the permitted use, you will need to obtain permission directly from the copyright holder. To view a copy of this license, visit <http://creativecommons.org/licenses/by/4.0/>.

© The Author(s) 2020